

The background of the top half of the image is a technical engineering drawing, likely a site plan or layout for a water supply or wastewater management system. It features various lines, curves, and annotations. A large black crosshair is centered over the drawing. In the upper right corner, a portion of a ruler is visible, showing measurements in centimeters. A pair of compasses is positioned in the lower right corner, resting on the drawing. The text 'CEC' is prominently displayed in the center of the crosshair.

CEC

**CHARU INFRA ENGINEERING
CONSULTANTS LLP**

The bottom half of the image shows an aerial view of a wastewater treatment plant. Several large, circular aeration tanks are visible, each with a central mechanical structure. The tanks are interconnected by a network of concrete channels and walkways. The surrounding area appears to be a well-maintained industrial site with green grass and some trees in the distance.

WATER SUPPLY AND WASTE WATER MANAGEMENT

ADDRESS: 90/60, FIRST FLOOR. A & B-BLOCK, MALVIYA NAGAR, NEW DELHI-110017
PHONE: +91-011-41414796 EMAIL: cec_je9@yahoo.co.in; charuinfra@gmail.com

About Us

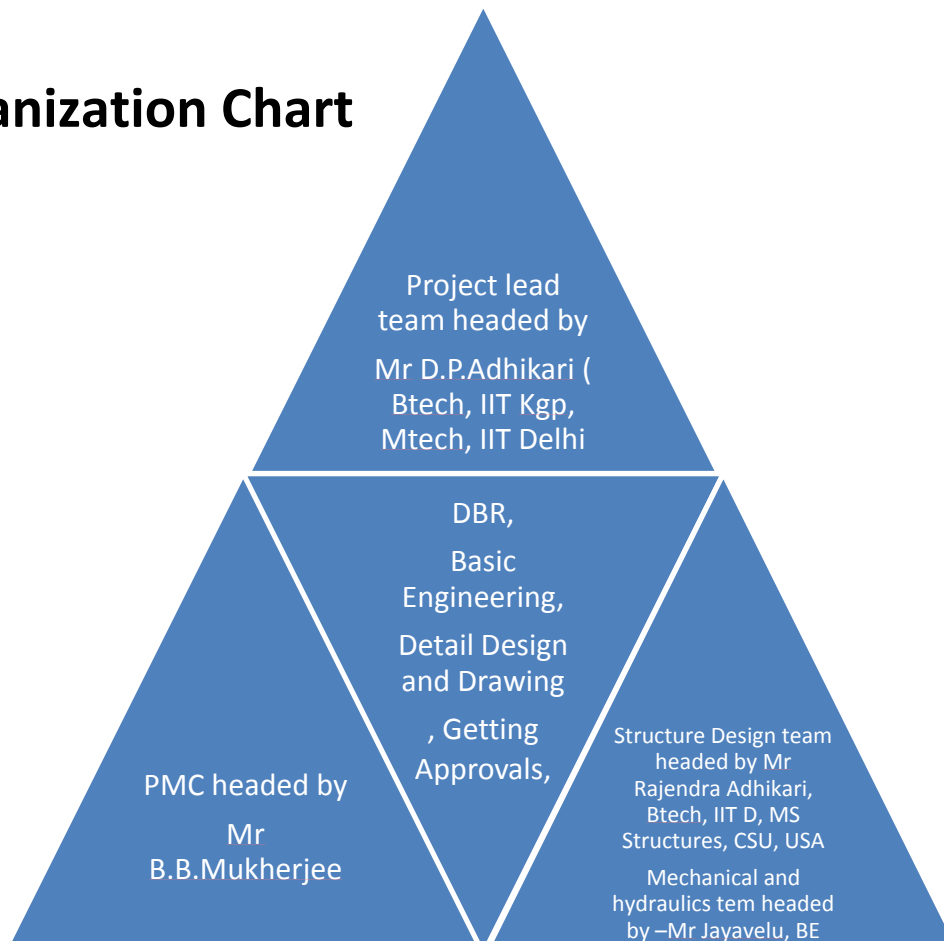
We are a team of structural engineers with strong qualifications from India and abroad, dedicated to our profession. Our organization is equipped with the latest software like Etabs, Staad Pro, Hec-Ras, Safe, etc, for achieving the most efficient designs for our clients. All drafting work is done on Autocad.

For further details and queries, visit our website – <http://www.cecengg.com/>

Head office – 90/60, First Floor, A & B Block,
Malviya Nagar, New Delhi – 110017
Ph - 011-41414796
Email – charuinfra@gmail.com

Regional office – 6/ 15/ A, Sahid Nagar,
1st floor, Kolkata – 78
Ph - 033-24154242

Organization Chart

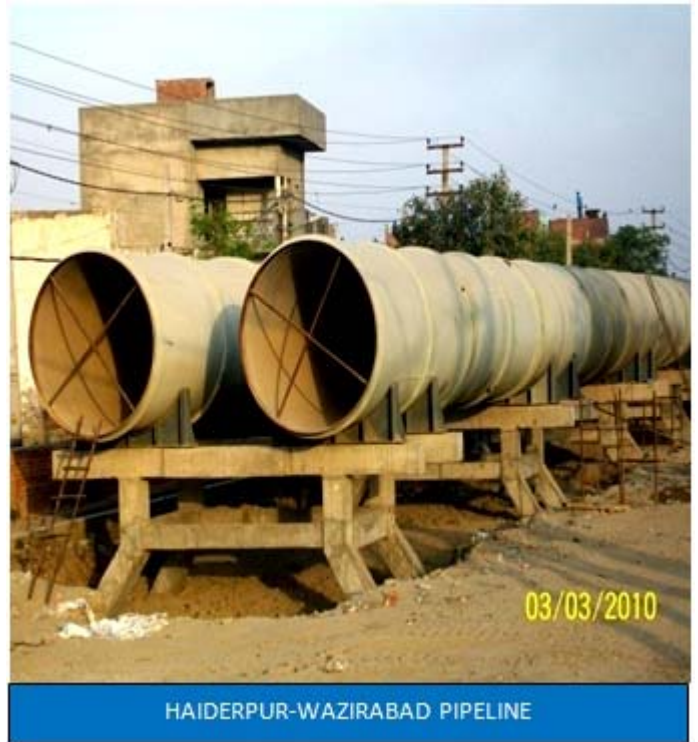


Our Projects

We have experience in civil and electromechanical design and approvals of underground/ over ground pipe, manholes etc. while giving due consideration to soil conditions, dia of pipe required and other parameters while

PIPE LINES

1. Intake Structure, Pipeline and 100 MLD WTP, Dhanbad
Dhanbad Water Supply Project (Maithon Dam)
2. Sewage Pump House and Sewage Conveying M.S. Pipe Line of 1525 mm Dia. (Yamuna Vihar)
3. Extension of Intake Pump House and M.S. Pipe Line at Mejia Thermal Power Station
Damodar Valley Corporation
4. Twin M.S Pipe Line Of 2500mm Dia. from Haider Pur to Wazirabad WTP
Delhi Jal Board
5. M.S Pipe Line including Pipe Bridges for conveying water from 50 MGDWTP at Dwaraka
Delhi Jal Board
6. Intake and Pipeline for Satpura Thermal Power Station
Madhya Pradesh Power Generating Co. Ltd., Jabalpur
7. 18.5 km RCC pipeline for Khan River Diversion Project
Water Recourses Department, M. P. Government
8. Hydraulicdesign of Pipeline Network at Rajgarh, HDC, Dandiya, CAD, Kishanganj and Parwati Project (Total HA 48293) for Parwan Project , MEILJWIL(JV), Kota



HAIDERPUR-WAZIRABAD PIPELINE

INTERCEPTOR PROJECTS

1. Laying of interceptor sewer along Najafgarh, Shahdara and Supplementary Drains Package 1 Dwarka
Delhi Jal Board
2. Laying of interceptor sewer along Najafgarh, Shahdara and Supplementary Drains Package 4 Rithala
Delhi Jal Board
3. Laying of interceptor sewer along Najafgarh, Shahdara and Supplementary Drains Package 5 Shahdara North
Delhi Jal Board
4. Laying of interceptor sewer along Najafgarh, Shahdara and Supplementary Drains Package 6 Shahdara South
Delhi Jal Board
5. Laying of interceptor sewer along Najafgarh, Shahdara and Supplementary Drains Package 3 Yamuna River
Delhi Jal Board



Pipe jacking with jacking force of 400 Tons



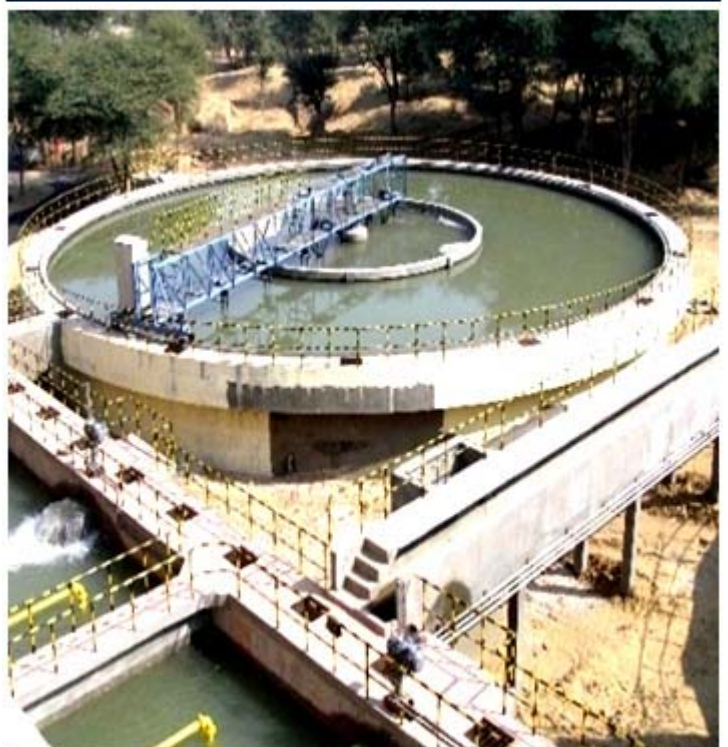
SPL-11 Interceptor Sewer Along Najafgarh, Package-3

WATER TREATMENT PLANTS

1. 40 MLD Water Treatment Plant at Beechal
Rajasthan Urban Infrastructure Development Project
2. 64 MLD Water Treatment Plant at Kota
Rajasthan Urban Infrastructure Development Project
3. Demineralization Plant
Parichha Thermal Power Project
4. Demineralization Plant
Mejia Thermal Power Project
5. Demineralization Plant
Chandrapur Power Project
6. Demineralization Plant
Lehra Mohabatt Power Project
7. Intake Structure, Pipeline and 100MLD WTP at
Dhanbad
Dhanbad Water Supply Project (Maithon Dam)
8. Water Treatment Plant
Neyveli Lignite Corporation Tamilnadu
9. 50 MGD WTP at Dwaraka
Delhi Jal Board
10. Pre Treatment Plant at NTPC Barh
NTPC associated with Mcnally Bharat
11. Pre Treatment Plant At NTPC Mauda
NTPC associated with Mcnally Bharat
12. Pre Treatment Plant At NTPC Rihand
NTPC associated with Mcnally Bharat
13. Pre Treatment Plant At NTPC Vindhyachal
NTPC associated with Mcnally Bharat
14. 3.4 MGD Augmentation of Drinking Water Supply
Govt. Of Bihar PHED, Munger
15. 120MLD WTP at Habra, West bengal. Contractor –
Vatech Wabag



WTP & ETP FOR NEYVELI LIGNITE CORP. TAMILNADU



WTP AT BEECHAL

WATER TREATMENT PLANTS

16. 3.4 MGD Augmentation of Drinking Water Supply
Govt. Of Bihar PHED, Jamalpur
17. 144 MLD Advance Water Treatment Plant at Sikandra, Agra
Uttar Pradesh Jal Nigam (UPJN), Agra
18. Water Treatment Plant
Kudgi Super Thermal Power Project Stage-I
19. Water Treatment Plant
2X 800 MW LARA STPP
20. Water Treatment Plant
1 X 500 FGUTPP, Stage IV, Unchahar
21. R.O. Plant at Gujarat refinery
Indian Oil Corporation Limited
22. 5.65 MLD WTP and Intake Structure, River Budhi Gandak
Govt. Of Bihar PHED, Begusarai
23. Water Treatment Plant 20MGD at Mohali
Veolia india Pvt Ltd
24. 182 MLD WWTP at Rithala
Delhi Jal Board
25. Water Treatment Plant
Ranebennur at Bangalore
Veolia India Pvt Ltd

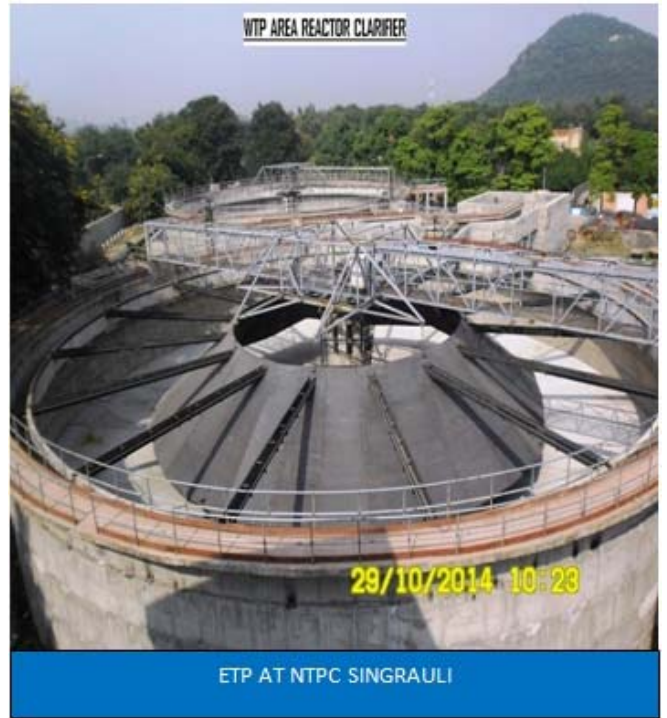


NETWORKINGPROJECTS

1. SEWAGE NETWORK ALONG WITH STPs
Survey, design, construction and commissioning of Sewerage network consisting of 18# STPs (SBR based Technology) and 1400 Km of sewerage network in
 - a) Rewa Municipality in MP.
 - b) Katni Municipality, M.P.
 - c) Satna Municipality, M.P.
 - d) Singrauli Municipality, M.P.
2. Diversion of effluents through underground pipes and Manholes along bank of Gomti River and use of the river side for economic and recreational purposes



3. Laying of interceptor sewer along Najafgarh, Shahdara and Supplementary Drains Package 1 Dwarka (Delhi Jal Board)
4. Laying of interceptor sewer along Najafgarh, Shahdara and Supplementary Drains Package 4 Rithala (Delhi Jal Board)
5. Laying of interceptor sewer along Najafgarh, Shahdara and Supplementary Drains Package 5 Shahdara North (Delhi Jal Board)
6. Laying of interceptor sewer along Najafgarh, Shahdara and Supplementary Drains Package 6 Shahdara South (Delhi Jal Board)
7. 18 K.M Sewer Network Hydraulic Design at Kanpur TWIC (Tamilnadu Water Investment Company) & JTETA (Jajmau Tannery Effluent Treatment Association)
8. Pipeline Network Design at HCS, Dandiya, Rajgarh MEILJWIL (JV)
9. Riverside Development work including canopies, tensile structures, STP and rain water harvesting at Dholera



Tensile Structure

Charu Infra Engineering Consultants has vast experience in structural engineering services for various types of treatment plants and intake structures. We have experience in well designs, intake structure designs with wave consideration and other special structure design criteria.

EFFLUENT TREATMENT PLANTS

1. 12 MLD CETP at Mayapuri
Delhi State Industrial and Infrastructure Development Corp.
2. 16.8 MLD CETP at Jhilmli
Delhi State Industrial and Infrastructure Development Corp.
3. 24 MLD CETP at Okhla
Delhi State Industrial and Infrastructure Development Corp.
4. 12 MLD CETPatSMA
Delhi State Industrial and Infrastructure Development Corp.
5. 35 MLD CETP at Bawana
Delhi State Industrial and Infrastructure Development Corp.
6. Effluent Treatment Plant
Indian Oil Corporation Limited, Guwahati
7. Effluent Treatment Plant
Neyveli Lignite Corporation Tamilnadu
8. 50 MLD CETP at Tajpur Road, Ludhiana
Punjab Dyers Association Ludhiana
9. 20 MLD CETP at Kanpur
TWIC (Tamilnadu Water Investment Company) &
JTETA (Jajmau Tannery Effluent Treatment Association)
10. ETP Plant ONGC URAN at Navi Mumbai
Projects and Development India Ltd



CETP at Kanpur

SEWAGE TREATMENT PLANTS

1. 10 MLD STP at Yelahanka Satellite Town, Bangalore
Bangalore Municipal Corporation
2. 70 MLD STP at Agar Takali, Nashik
Nashik Municipal Corporation
3. 30 MLD STP at Loni, Ghaziabad
U.P. Jal Nigam
4. Augmentation of 168 MLD MPS and 100MLD STP
Haryana Urban Development Authority
5. 18 # STPS (SBR Based) in Madhya Pradesh, KK Spun
6. Assam Petrochemicals Limited, Namrup
Engineering India Ltd
7. AWRS Plant at Orissa
Orissa Power Generation Corporation Ltd
8. HURL at Barauni
Projects and Development India Ltd
9. 50 MLD STP at Varanasi
Varanasi STP ProjectPvt Ltd



- 10. 12 MLD STP at Rohtak
WAPCOS Ltd
- 11. 60 MLD STP Pahari at patna
Bihar Urban Infrastructure Development Corporation Ltd.
- 12. 21 MLD STP at Etawah
Uttar Pradesh Jal Nigam
- 13. 21 MLD Sewage Pumping Station at Kamalichak
Bihar Urban Infrastructure Development Corporation Limited
- 14. 50 MLD Sewage treatment plant at Kankarbagh and
Network SPS (4nos pumping stations)
- 15. 20 MLD TSP at Rohtak for WAPCOS Ltd
- 16. 15 MLD STP at Rohtak for WAPCOS Ltd
- 17. 50 MLD Sewage treatment plant at Kankarbagh for BUIDCO
- 18. AWRS Plant at Odisha
OPGCL (Odisha Power Generation Corporation Ltd)



Intake AWRS at Odisha



AWRS Plant at Odisha



AWRS Plant at Odisha

Miscellaneous Project

1. Hydraulic and Process at Baarauni Hindustan Urvarak Rasayn Limited
2. Hydraulic and Process at Sindri Hindustan Urvarak Rasayn Limited

INTAKE STRUCTURES

1. Intake Structure at Akelgarh (Chambal River)
Rajasthan Urban Infrastructure Development Project
2. Intake Structure (Tawi River)
Jammu Development Authority
3. Intake and Pipeline for Satpura Power Station
Madhya Pradesh Power Generating Co. Ltd., Jabalpur
4. 75m Deep Intake Well (Ganga River) along With De-Silting Basin near Patna
Barauni Thermal Power Station
5. 30m Deep Composite Intake Well (Brahmaputra River)
Guwahati Water Supply Project
Funded by Japan International Cooperation Agency (JICA)
6. 5.65 MLD WTP and Intake Structure (Budhi Gandak River) Govt. Of Bihar PHED, Begusarai
7. Intake work, WTP and OHTs
Ranebennur
8. 141 MLD Intake System at Bhagalpur
Bihar Urban Infrastructure Development Corporation Limited.
9. Intake for DVC on River Damodar



INTAKE STRUCTURE ON RIVER SIDE OF DAMODAR



Intake at Bharalpur



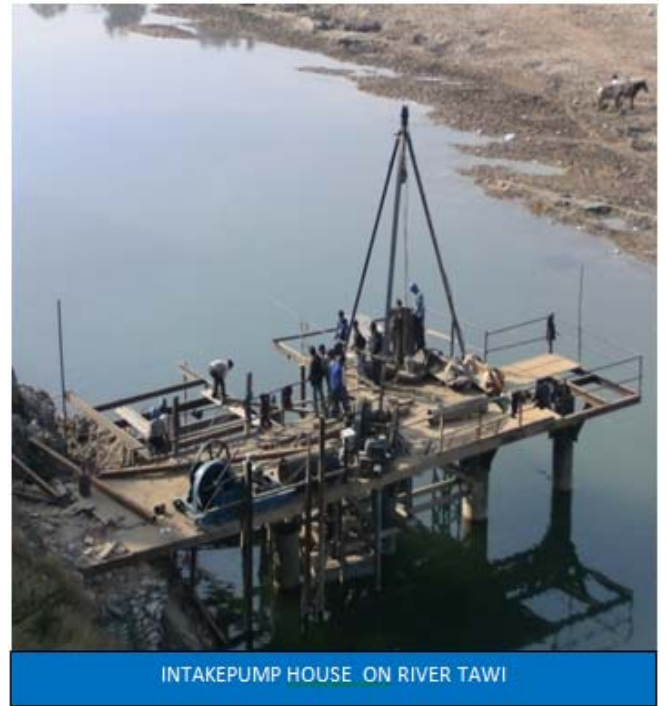
Intake Structure at Bhagalpur



Jeckwell at Bhagalpur

PUMP HOUSES

1. Sewage Pump House and Sewage Conveying M.S. Pipe Line of 1525 mm Dia. (Yamuna Vihar)
Delhi Jal Board
2. Extension of Intake Pump House and M.S. Pipe Line at Mejia Power Station
Damodar Valley Corporation
3. 25MGD Treated Effluent Pumping Station at Rithala, Delhi
Delhi Jal Board
4. Sewage Pumping Station at Preet Vihar, Delhi
Delhi Jal Board
5. G.H. Canal Sump and Pump House (18 m dia., 17 m deep)
Gomti Pollution Control Board, U.P. Jal Nigam, Kanpur
6. Main Pumping Station at Kanpur under Ganga Action Plan-Phase 2 (51.5 m dia. and 14 m deep)
Gomti Pollution Control Board, U.P. Jal Nigam, Kanpur
7. I&O works 111.33 MLD and IPS 320 MLD at KukrailNala, Lucknow. (49.2 m dia. and 14 m deep)
Gomti Pollution Control Board, U.P. Jal Nigam, Kanpur
8. 4 Nos Network Pumping Station at Digha and Kankarbagh for BUIDCO



Our Clients

CharuInfraEngineering Consultants has worked with both private and government companies. A few of our clients are listed below



Barauni Thermal Power Station
a unit of
Bihar State Power Generation Company Ltd.



Delhi State Industrial and
Infrastructure Development
Corporation Ltd.



दामोदर घाटी निगम
DAMODAR VALLEY CORPORATION



Gannon Dunkerley & Co.



MADHYA PRADESH JAL NIGAM MARYADIT
(A GOVT. OF MADHYA PRADESH UNDERTAKING)



Mcnaally bharat Engineering co.Ltd



नाशिक महानगरपालिका
Nashik Municipal Corporation



राजस्थान शहरी आधारभूत विकास परियोजना

Government of Rajasthan
Rajasthan Urban Infrastructure Development Project



TATA STEEL PROCESSING AND
DISTRIBUTION LIMITED



Date: 11.02.2015

TO WHOM IT MAY CONCERN

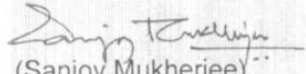
This is to inform that the project for 'Design and Construction of Interceptor Sewers along with Najafgarh, Supplementary and Shahdara Drains for abatement of pollution in Yamuna River' under Delhi Jal Board was awarded to three turnkey contractors as given below:

1. Vishva Infrastructures and Services Pvt. Ltd. (VISPL)
2. DSCL-FENG SHUN WABAG Consortium (DSCL)
3. Pratibha Industries Limited

Orders for the above construction were placed in July 2011.

M/s VISPL and M/s DSCL proposed the consortium of M/s Charu Engineering Consultant and M/s Progressive Engineers to EIL for the detail design of all interceptors and pumping station under their packages (amounting to works of approximately Rs. 600 Crores). EIL approved the consortium after reviewing their credential. M/s Charu Engineering Consultant, having office at JE-9, Khirki extension, 106-107, First floor, New Delhi 110017, was involved in detailed design and preparation of "good for construction" & as built drawing of all interceptor chambers and pumping stations under packages of VISPL & DSCL. Part of the project has been commissioned in 2014 and performance of M/s Charu Engineering Consultant has been found to be satisfactory.

This certificate is issued to M/s Charu Engineering Consultant Limited on their request for bidding for other jobs and does not relieve them of their contractual responsibilities.


(Sanjoy Mukherjee)
GM (Projects)

उत्कृष्टता का आधार—हमारे कर्म

DELIVERING EXCELLENCE THROUGH PEOPLE

फोन / Phone 0124-3803009

फैक्स / Fax: 0124-2391410

email: sanjoy@eil.co.in

पंजीकृत कार्यालय : इंजीनियर्स इंडिया भवन, 1, भिकाजी कामा प्लेस, नई दिल्ली-110 036
Regd. Office : Engineers India Bhawan, 1, Bhikaji Cama Place, New Delhi -100 036

Visit us as [http //www.engineersindia.com](http://www.engineersindia.com)



Date – 16-05-2014

TO WHOMSOEVER IT MAY CONCERN

This is to certify that M/s Vishwa Infrastructure & Services Pvt. Ltd. is executing the Interceptor Sewer Project "Design and Construction of Interceptor Sewers along Najafgarh , Supplementary & Shahadra Drain for Abatement of Pollution in River Yamuna" for Delhi Jal Board and M/s Charu Engineering Consultant (office at JE-9, Khirki Extension, 106-107, First floor, New Delhi-110017) was appointed as Consultant for Engineering/ design work, which is executed by them satisfactorily for complete engineering including Civil, Mechanical & Electrical works/ process and structural design of Package-P1 (Dwarka) & P6 (Shahadra).

The Engineering is in advance stage of completion including approval from M/S Engineers India Limited, New Delhi and carried out to our satisfaction e.g. following structures are under construction as

- a. R.C.C shafts by Well Sinking method.
- b. HDPE Lined RCC Jacking Pipe by Slurry based MTBM system of DN900 & DN1600.
- c. Civil, Mechanical & Electrical works of Intercepting Chambers & Pumping Station.

This letter is issued on the request of M/s Charu Engineering Consultant for participating in other Tender Biddings.

For M/s Vishwa Infrastructure & Services Pvt. Ltd.


(Authorised Signatory)



VISHWA INFRASTRUCTURES AND SERVICES PVT. LTD.

☒ Regd. & Corporate Office : 1-11-256/C/24, Plot No. 24, Gagan Vihar Colony, Begumpet, Hyderabad - 500 016, A.P. (INDIA)
Phone : +91 40 2776 3835 / 36 /37 Fax : +91 40 2776 3082, Email: info@vishwainfra.in website: www.vishwainfra.in



...Engineering Excellence

VISHWA INFRASTRUCTURES AND SERVICES PVT. LTD.

An ISO 9001-2008, OHSAS 18001-2007 Certified Company
Date - 04-04-2012

TO WHOMSOEVER IT MAY CONCERN

This is to certify that R.C.C shafts - 40 Nos. having diameter 6.25 Mtr to 7.0 Mtr and depth upto 13.0 Mtr is being constructed by M/s Vishwa Infrastructure & Services Pvt. Ltd. for Delhi Jal Board as per the design & drawing supplied by M/s Charu Engineering Consultant, New Delhi.

Shafts - 6 Nos. are already constructed by well sinking method as per M/s Charu Engineering Consultant's Design & Drawing are satisfactory.

This letter is issued on the request of M/s Charu Engineering Consultant for participating in other Tender Biddings.

For M/s Vishwa Infrastructure & Services Pvt. Ltd.

J. Vikram
(Director)

Corporate & Correspondence Office : 6-3-1192, Block A, 4th Floor, My Home Tycoon Building, Kundanbagh, Begumpet, Hyderabad - 500 016, A.P. (INDIA)
Phone : +91 40 2341 5570/71/72, Fax: +91 40 2342 5575, e-mail: info@vishwainfra.in web: www.vishwainfra.in

Registered Office : 1-11-256/C/24, Plot No. 24, Gagan Vihar Colony, Begumpet, Hyderabad - 500 016, A.P. (INDIA)

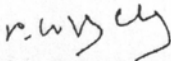
Date 3rd April 3, 2012

TO WHOM SO EVER IT MAY CONCERN

This is to certify that R.C.C. Well of 22.0m dia & 18.97m deep is being constructed by us by well sinking method at Preet Vihar under Delhi Jal Board as per design & drawing supplied by M/S Charu Engg. Consultant, New Delhi .

The well is already sunk upto 10.0m

For SPML. Infra Limited


P. K. Roy Chowdhury
G.M. (Projects)

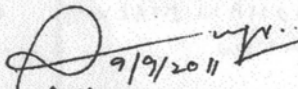
TO WHOM SO EVER IT MAY CONCERN

This is to certify that M/s Charu Engineering Consultants, office at JE - 9, 106-107 Khirki Extension, Malviya Nagar, New Delhi - 110017 has offered Structural Consultancy Services for the following important projects:-

<u>S.NO.</u>	<u>PROJECT NAME</u>
1	21.6MLD CETP, Naraina Project
2	24 MLD CETP for DSIDC at Okhla
3	35 MLD CETP for DSIDC at Bawana Industrial Estate.
4	Pumping Station at 90MGD for DJB (Yamuna vihar)
5	Twin M.S Pipe line of 2500mm dia from Haiderpur to Wazirabad W.T.P, DJB (Pkg-II)
6	25MGD Pumping Station at Rithala

All the above Projects are already commissioned excepting S. No. 5 which is likely to be commissioned in next three months.

For SPML Infra Ltd.


9/9/2011
Authorized Signatory

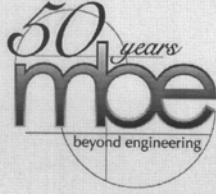


SPML INFRA LIMITED

SPML House, Plot No. 65, Sector-32 Institutional Area, Gurgaon - 122001, Haryana
Ph: +91-124-3944555. Fax: +91-124-3983201
Email: info@spml.co.in, www.spml.co.in



Regd. Office: F - 27/2, Okhla Industrial Area, Phase II, New Delhi - 110 020



McNally Bharat Engineering Company Limited

Ecospace Campus 2B 11F/12 (Old Plot No AA II/Blk 3)
New Town Rajarhat North 24 Parganas Kolkata 700156
T +91 33 66281111 30141111 F +91 33 66282277 30142277
E mbe.corp@mbecl.co.in W www.mcnallybharat.com

Date: 02.01.2013

TO WHOM SO EVER IT MAY CONCERN

This is to certify that the Civil, Structural & Architectural engineering including drawing and document approval from NTPC of the following project has been successfully carried out & completed by M/s CHARU ENGG. CONSULTANTS, having registered office at JE-9 Khirki Extension, 106-107 1ST Floor. (OPP. B-Block Trikona Park, Malviya Nagar), New Delhi-110017.

1. Pretreatment (PT-CW System & PT-DM) Package of Vindhychal Super Thermal Power Station STPP, Stage -IV (2X500 MW).
2. Ash water Recovery Pump House and Pipe Crossings over Nallahs along with respective superstructures for crossings of Ash Water Recirculation Treatment System Package For Singrauli STPP, Stage I & II (2000 MW).
3. Pretreatment Package of Mauda Super Thermal Power Project (2X500MW).

We certify that the said engineering was satisfactory to our expectation.

This certificate has been issued to M/s CHARU ENGG. CONSULTANTS in good faith for tendering purpose.

(Soumitra Chandra)
Sr. General Manager (HOD, SBU-Water)

An ISO 9001:2008 & ISO 14001:2004 Company

Member Williamson Magor Group

Corporate & Registered Office 4 Mangoe Lane Kolkata 700001



Date – 09-06-2014

TO WHOMSOEVER IT MAY CONCERNED

This is to certify that M/s Larsen & Toubro Limited is executing the Sewer Project “Providing Sewerage facility in Mohan Garden group of Colonies” for Delhi Jal Board and M/s Charu Engineering Consultant (office at JE-9, Khirki Extension, 106-107, First floor, New Delhi-110017) was appointed as Consultant for Design & Engineering of Micro Tunneling work, which is executed by them satisfactorily and work is in progress.

The engineering is in advance stage of completion including approval from IIT – BHU, Varanasi and carried out to our satisfaction e.g. following structures are under construction.

- a. RCC Shafts by Well Sinking method.
- b. HDPE Lined RCC Jacking Pipe by Micro tunneling method

This Letter is issued on the request of M/s Charu Engineering Consultant for participating in other Tender Biddings.

For Larsen & Toubro Limited,

(V. K. SHUKLA)

Project Manager
Mohan Garden Sewerage Scheme, Delhi





**Department of Civil Engineering
Indian Institute of Technology (BHU), Varanasi
U.P. - 221005, India**

Dr. Pramod Kumar Singh, Professor

Tuesday, August 13, 2013

To;
M/s Charu Engineering Consultants
JE-9 Khirki Extension
106-107 1ST Floor
OPP. B-Block Trikona Park
Malviya Nagar
New Delhi-110017

Subject: Vetting of design and drawings for RCC pipes for Omkareshwar Lift Irrigation Project
Phase -IV, Group-II.

Reference: Your letter No.-Nil dated on 06.08.2013

Dear Sirs,

Vetting of design and drawings of RCC pipes of 1600mm dia. with 5.0m and 2.0m overburden, of Omkareshwar canal project phase IV of NVDA Government of MP has been carried out by me as provided by M/s Charu Engineering Consultants, New Delhi and checked the design and drawings presented to me.

The design and drawings are found in order and I am returning these to you after duly attesting that I have vetted these.

Thanking you

Yours sincerely

Dr. Pramod Kumar Singh

Dr. Pramod Kumar Singh
Professor
Dept. of Civil Engineering
I.I.T.(B.H.U.), Varanasi
Varanasi-221005

Encl.: as above.



TO WHOM SO EVER IT MAY CONCERN

This is to certify that M/S DSC LTD having office at E-9 South Extension Part II ,New Delhi -110049 is executing “**Interceptor Sewer Along Nazafgarh, Supplementary and Shahdara Drains for Abatement of Pollution in Yamuna River Package 4 (Rohini- Rithala) & Package – 5 (North Shahdara Delhi)**”. For Delhi Jal Board and M/S Charu Engineering Consultants having office at JE-9,Khirki Extension,106-107 First Floor ,New- Delhi -110017 was appointed as Consultant for Engineering/Design Work, which is executed by them satisfactorily for complete Engineering including Civil, Mechanical & Electrical works, Process and Structural Engineering of Package –P4 (Rohoni –Rithala) & P-5 (North Shahdara Delhi) , value of project approximately 202 Crore and 210 Crore respectively. The Project was started in 2011.

M/S Charu Engineering Consultants has completed following including approval from M/S Engineers India Limited, New Delhi (PMC for Delhi Jal Board).

1. R.C.C Jacking pipe of 600 mm dia,1200 mm dia, 1600 mm dia & 2000 mm dia.
2. Jacking shaft ,Receiving Shaft including related works.
3. Hydraulic, Electro Mechanical and Civil Design & Drawing of Intercepting Chambers including Weir Structure and other associated works.
4. Complete design and drawing of Manhole/drop manhole with pre-cast units
5. Hydraulic, Electro Mechanical and Civil Design & Drawing of Pumping Stations.

The Engineering is at completion stage and M/S Charu Engineering Consultants has carried out the complete scope of work to our satisfaction as well as satisfaction of the Client, Delhi Jal Board.

This letter is issued on the request of M/S Charu Engineering Consultant for participating in Tender Bidding

For M/S DSC LIMITED


Project Director,DJB Projects



DSC LIMITED

Office : 602-A, Udyog Vihar, Phase - V, Gurgaon - 122016 (Haryana) | Tel : +91-124-4970777/888 | Fax : +91-124-4970855
Registered Office : E-9, 3rd Floor, South Extension, Part - II, New Delhi - 110049 | Tel : +91-11-40780900 | Fax : +91-40780915
www.dsclimited.com

VARANASI STP PROJECT PRIVATE LIMITED

Registered Office: 513/A, 5th Floor, Kohinoor City, Kirool Road, Kurla (west), Mumbai-400070

Corporate Office: 6th Floor, Plot No.19, Film City, Sector 16 A, Gautam Buddha Nagar, Noida, UP-201301

CIN: U41000MH2017PTC299801, Tel No: 022 71084585

Date: 14th-Jul-2021

TO WHOM SO EVER IT MAY CONCERN

This is to certify that M/S Varanasi STP Project Pvt. Ltd, C/o *Essel Infra Projects Ltd* has executed the 50 MLD STP Plant at Varanasi which is a HAM project

M/S Varanasi STP Project Pvt.Ltd. C/o, *Essel Infra Projects Ltd* had engaged **M/S Charu Infra Engineering Consultant LLP**, having Office at 90/60 1st Floor Maliviya Nagar, New Delhi 110017 as Design Engineering Consultant for the above project.

The Salient Features of the above project are as follows

1. Interceptor of Nala for 50 MLD Flow.
2. Pump house.
3. Rising main.
4. 50 MLD STP SBR based
5. Earthen Bund 4.5m High
6. Outfall Structure.

The cost of the project is approximately156 Cr.

The project is executed successfully as per the Design and Drawing supplied by **M/S Charu Infra Engineering Consultant LLP** which is duly vetted by IIT Varanasi also

The letter is issued on Request of **M/S Charu Infra Engineering Consultant LLP**

Thanking you and assuring you of our best services at all times.

Yours Sincerely,

For Varanasi STP Project Pvt



Pallav Srivastava
Authorized Signatory